



EXAMINATION NO.: _____

THE MALAWI NATIONAL EXAMINATIONS BOARD
2020 MALAWI SCHOOL CERTIFICATE OF EDUCATION EXAMINATION

BIOLOGY

Subject Number: M022/I

Thursday, 21st January 2021

Time Allowed: 2 hours
8:00 – 10:00 am

PAPER I (100 marks)

Instructions:

1. This paper contains 11 printed pages. Please check.
2. Before you begin, fill in your Examination Number at the top of the question paper and on all other sheets.
3. This paper has two sections, A and B. Section A has ten questions and Section B has three questions.
4. Answer all the 13 questions in the spaces provided. The maximum number of marks for each answer is indicated against each question.
5. In the table provided on this page, tick against the question number you have answered.
6. At the end of the examination, hand in your paper to the invigilator when time is called to stop writing.

Question Number	Tick if answered	Do not write in these columns	
1			
2			
3			
4			
5			
6			
7			
8			
9			
10			
11			
12			
13			

© 2020 MANEB

Turn over/...

Section A (70 marks)

1. Figure 1 is a diagram of a mammalian sperm. Use it to answer the questions that follow.

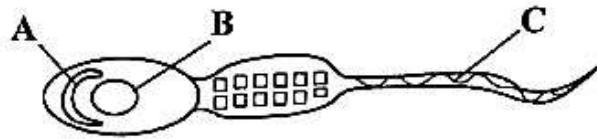


Figure 1

- a. Name the part labelled B.

_____ (1 mark)

- b. State the function of the part labelled C.

_____ (1 mark)

- c. Explain what happens to part labelled A during fertilisation.

_____ (2 marks)

- d. Explain any two adaptations of the sperm for movement.

_____ (4 marks)

2. a. State any two functions of blood plasma.

_____ (2 marks)
Continued/...

nued)

Mention any two characteristics of blood capillaries.

(2 marks)

Mention the blood vessel that supplies blood to the heart.

(1 mark)

Explain any two adaptations of red blood cells to its function.

(4 marks)

Define blood transfusion.

(1 mark)

State any two types of blood donors.

(2 marks)

State any three factors to be considered before organ transplant.

- (i) _____
- (ii) _____
- (iii) _____

(3 marks)

4. a. State any two properties of enzymes.

(i) _____

(ii) _____

(2 marks)

b. Explain any three adaptations of small intestine for food absorption.

(i) _____

(ii) _____

(iii) _____

(6 marks)

d. Mention any one function of the large intestines.

(1 mark)

5. Figure 2 is a diagram showing a type of a bone injury. Use it to answer questions that follow.

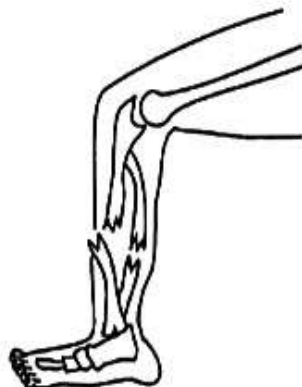


Figure 2

a. State the type of bone injury illustrated in the Figure.

_____ (1 mark)

Continued/...

marks)

(3 marks)

(3 marks)

marks)

5. (Continued)

- b. Describe first aid that can be given to a person with the fracture shown in 5 (a).

(6 marks)

6. Figure 3 is a diagram of a structure in the human digestive system. Use it to answer the questions that follow.

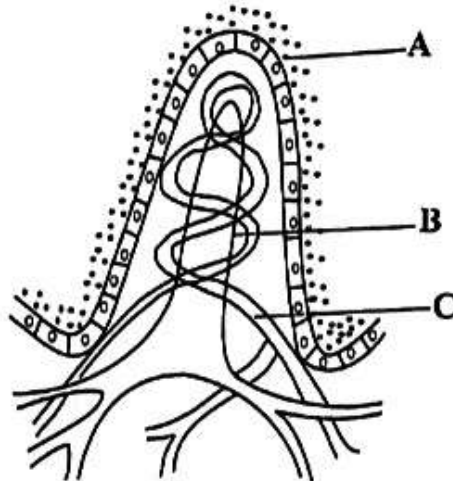


Figure 3

- a. (i) Name the structure.

_____ (1 mark)

- (ii) Mention parts labelled A and C.

A: _____

C: _____ (2 marks)

Continued/...

6. a. (Continued)

(iii) State the function of the part labelled B.

(1 mark)

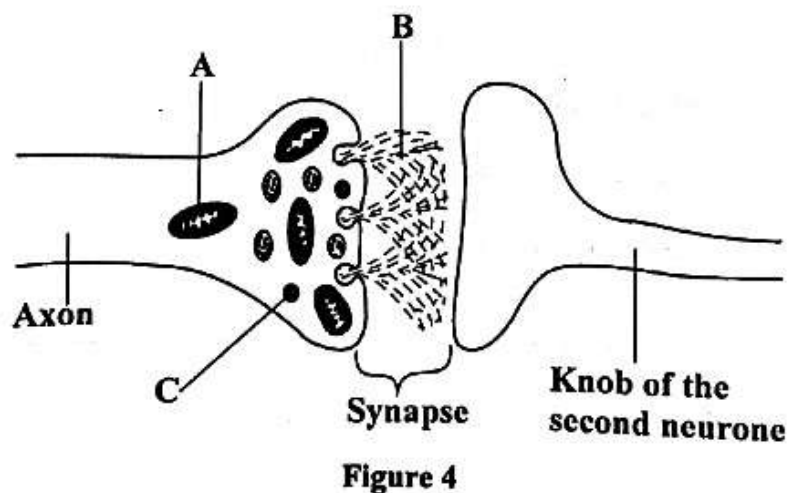
b. State the end product of protein digestion.

(1 mark)

7. Explain any **three** factors that increase the risk of cancer.

(6 marks)

8. **Figure 4** is a diagram showing a synaptic junction. Use it to answer the questions that follow.



Continued/...

8. (Continued)

- a. (i) Name the parts labelled B and C.

B: _____

C: _____ (2 marks)

- (ii) Explain the importance of having part A at the synaptic knob.

(2 marks)

- b. Which chemical influences movement of vesicles at the synaptic knob?

(1 mark)

9. a. State any **three** functions of the circulatory system.

(i) _____

(ii) _____

(iii) _____

(3 marks)

- b. Name the muscles that make up the heart.

(1 mark)

- c. To which group of muscles do the muscles that make up the heart belong?

(1 mark)

Continued/...

9. (Continued)

d. Give two characteristics of the muscles that make up the heart.

(i)

(1 mark)

(ii)

(1 mark)

10. Explain any **four** adaptations of camels to their habitat.

(8 marks)

Continued/...

This image shows a single sheet of white paper with horizontal blue or grey ruling lines. The lines are evenly spaced and run across the width of the page. There is no handwriting or other markings on the paper.

EXAMINATION NO.: _____ M022/I
Page 11 of 11

Page 11 of 11

-
- This image shows a single sheet of white paper with horizontal blue or grey ruling lines. The lines are evenly spaced and run across the width of the page. There is no handwriting or other markings on the paper.

END OF QUESTION PAPER

Scanned with ACE Scanner